

GPS Waypoints, 2020

# Harbor Island

Darryl Zoeckler





# The beach at Harbor Island



## GPS Waypoint Stations

	DEGREES / MINUTES		DECIMAL	
	LATITUDE	LONGITUDE	LATITUDE	LONGITUDE
WAYPOINT #1	32° 23' 56" N	80° 25' 47" W	32.398889	80.429722
WAYPOINT #2	32° 24' 1" N	80° 25' 41" W	32.400278	80.428056
WAYPOINT #3	32° 24' 5" N	80° 25' 34" W	32.401389	80.426111
WAYPOINT #4	32° 24' 7" N	80° 25' 30" W	32.401944	80.425
WAYPOINT #5	32° 24' 19" N	80° 25' 45" W	32.405278	80.429167
WAYPOINT #6	32° 24' 26" N	80° 25' 52" W	32.407222	80.431111
WAYPOINT #7	32° 24' 32" N	80° 25' 58" W	32.408889	80.432778
WAYPOINT #8	32° 24' 38" N	80° 26' 2" W	32.410556	80.433889
WAYPOINT #9	32° 24' 43" N	80° 26' 9" W	32.411944	80.435833
WAYPOINT #10	32° 24' 46" N	80° 26' 14" W	32.412778	80.437222
WAYPOINT #11	32° 24' 47" N	80° 26' 25" W	32.413056	80.440278
WAYPOINT #12	32° 24' 41" N	80° 26' 36" W	32.411389	80.443333



# GPS Waypoint Stations

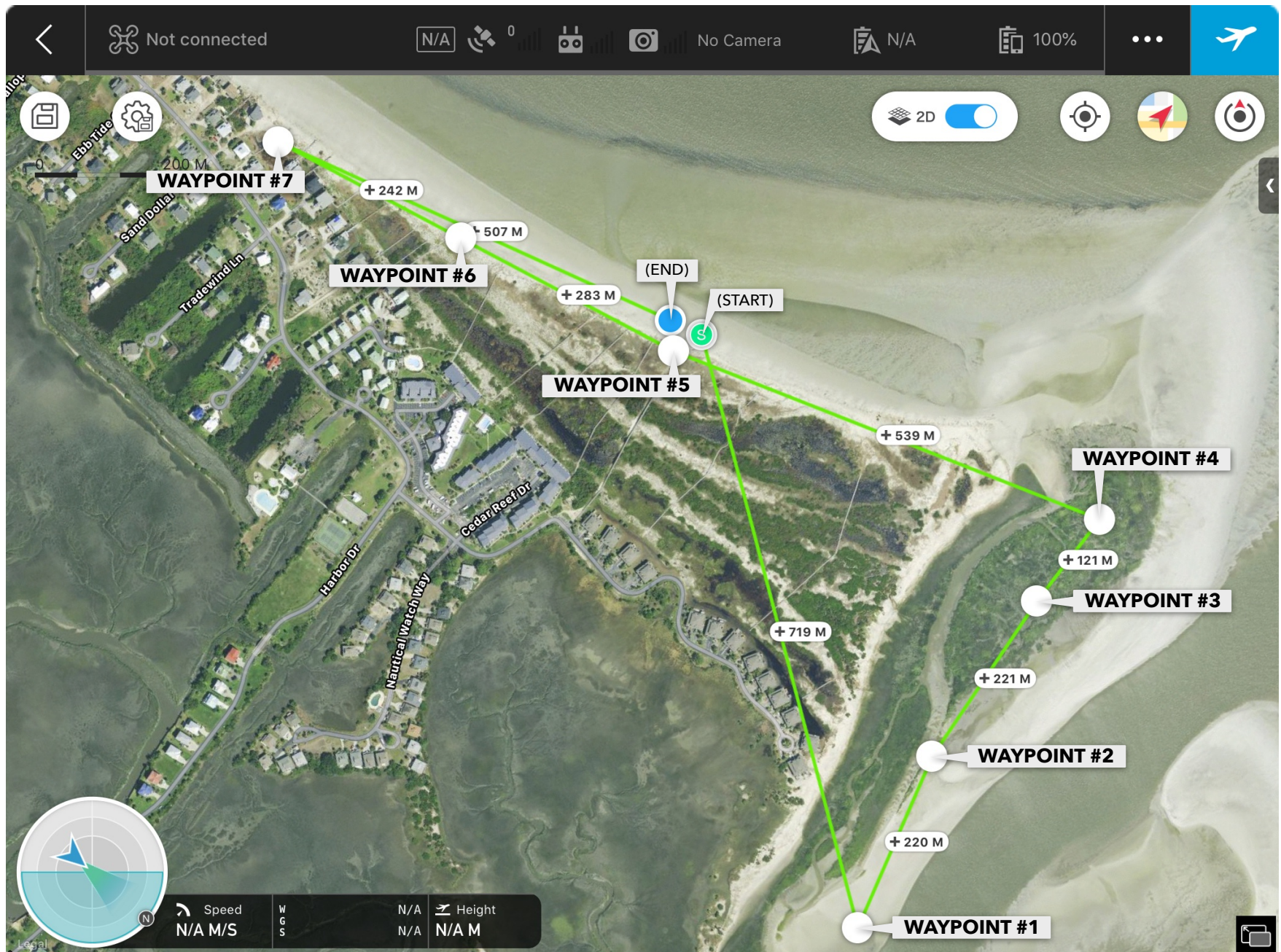
	PHYSICAL LOCATION
WAYPOINT #1	PAINTED STAKE IN SAND - south end of island behind 49 A&B Pelican Point
WAYPOINT #2	PAINTED STAKE IN SAND - heading north on the beach towards Harbor River
WAYPOINT #3	PAINTED STAKE IN SAND - heading north on the beach towards Harbor River
WAYPOINT #4	PAINTED STAKE IN SAND - heading north on the beach towards Harbor River
WAYPOINT #5	PUBLIC ACCESS #1 - using the sign pole as the marker
WAYPOINT #6	PUBLIC ACCESS #2 - using the sign pole as the marker
WAYPOINT #7	PUBLIC ACCESS #3 - using the sign pole as the marker
WAYPOINT #8	PUBLIC ACCESS #4 - using the sign pole as the marker
WAYPOINT #9	PUBLIC ACCESS #5 - using the sign pole as the marker
WAYPOINT #10	PUBLIC ACCESS #6 - using the sign pole as the marker
WAYPOINT #11	PUBLIC ACCESS #7 - using the sign pole as the marker
WAYPOINT #12	PAINTED STAKE IN SAND - painted stake at PUBLIC ACCESS #8





# GPS Waypoint - South Flight Path

(south end of island)



## FLIGHT DIRECTION

Starting from PUBLIC ACCESS #1(control station)

fly to WAYPOINT #1 (painted stake), Photograph

fly to WAYPOINT #2 (painted stake), Photograph

fly to WAYPOINT #3 (painted stake), Photograph

fly to WAYPOINT #4 (painted stake), Photograph

fly to WAYPOINT #5 (Access #1 sign marker), Photograph

fly to WAYPOINT #6 (Access #2 sign marker), Photograph

fly to WAYPOINT #7 (Access #3 sign marker), Photograph

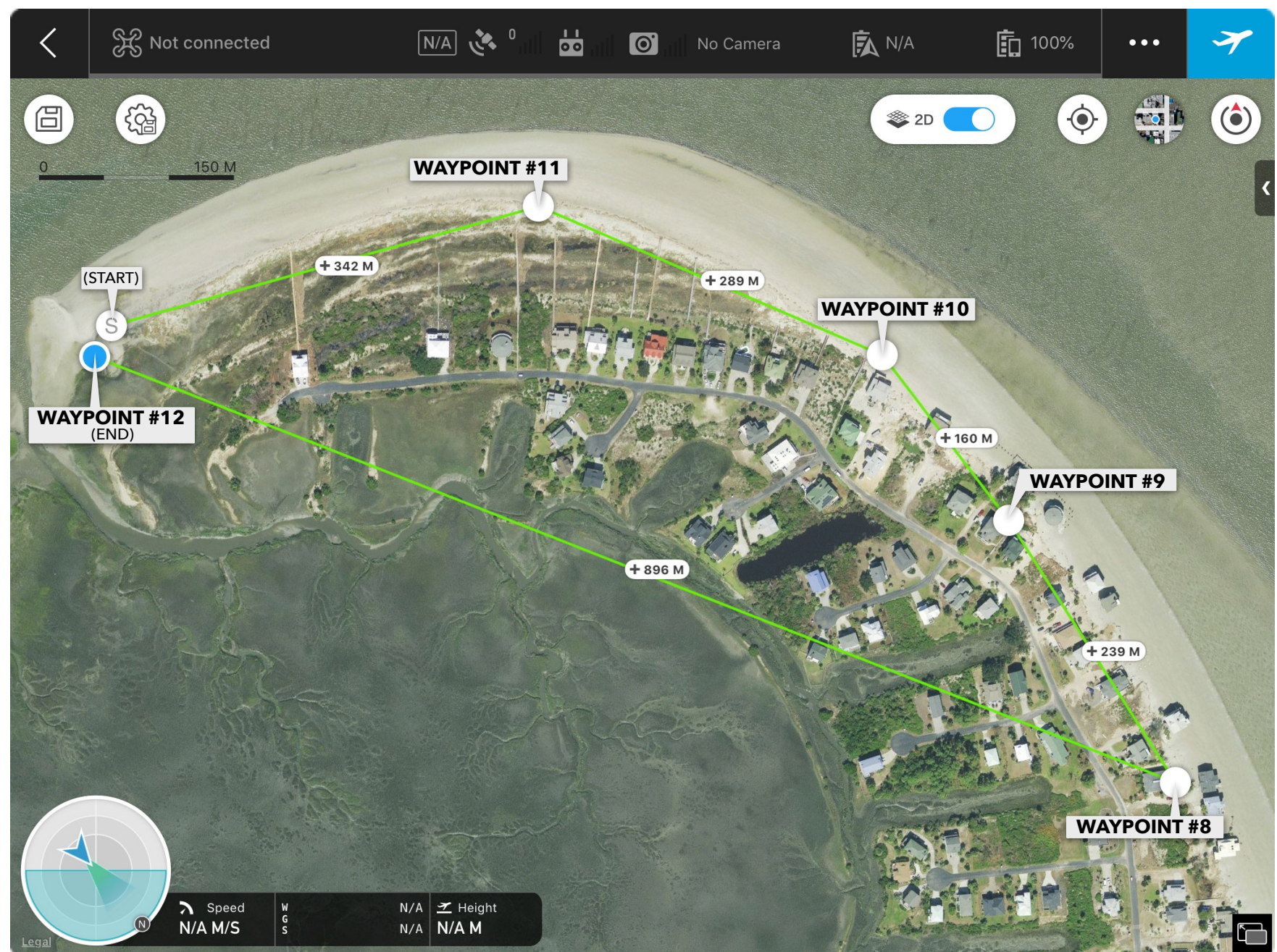
Return to home (PUBLIC ACCESS #1)

NOTE: Satellite image is for rough approximation only and may be outdated.



# GPS Waypoint - North Flight Path

(north end of island)



## FLIGHT DIRECTION

Starting from (control station) PUBLIC ACCESS #8 (stake)  
fly to WAYPOINT #11 (Access #7 sign marker), Photograph  
fly to WAYPOINT #10 (Access #6 sign marker), Photograph  
fly to WAYPOINT #9 (Access #5 sign marker), Photograph  
fly to WAYPOINT #8 (Access #5 sign marker), Photograph  
Return to home WAYPOINT #12, PUBLIC ACCESS #8 (stake), Photograph

NOTE: Satellite image is for rough approximation only and may be outdated.